

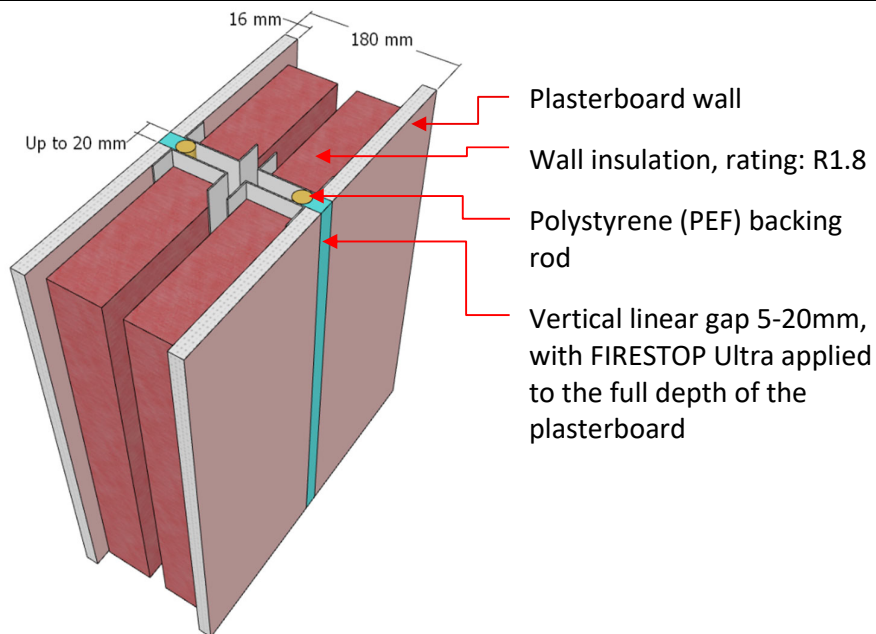


**Firestop
Centre**
Innovative Firestop Solutions

System FC513

Penetration Detail: Vertical Linear
Gap up to 20mm fires-stopped
with FIRESTOP Ultra Sealant

Separating Element: Min. 180mm thick
Double Stud FR Plasterboard (2 x
13mm) or Concrete Wall



Installation Instructions:

Linear gap:

1. Ensure surfaces are free of grease or other contaminants.
2. Friction fit suitable sized PEF backig rod to the required depth.
3. Apply FIRESTOP Ultra to the full depth of the plasterboard (nominal 16mm) on both sides, finished flush with the plasterboard face.



Services & Ratings (FRR)

Linear Gap Orientation	Gap Widths	Sealant Depth	FRR
Vertical	5mm, 10mm, 15mm & 20mm	16mm	-/90/90

- **FIRESTOP Ultra** is suitable for both interior and exterior applications - refer to the *FIRESTOP Ultra UV-Adhesion Report* for details.

Compliance

Report	Fire TS Lab Report RIR2206401
Pages	4 & 11-14
Standards	AS1530.4-2014 & AS4072.1-2005

Firestop Centre Technical support:
Tel: +64 9 483 4000
info@firestopcentre.co.nz
www.firestopcentre.co.nz

Drawing Rev: 1.0

Scale: NTS

Disclaimer: Firestop Centre may change product specifications without notice as part of our ongoing development and testing. All information in this document is provided in good faith and for guidance only. All drawings are for illustration purposes only and may not reflect the actual product. Since we cannot control how the product is installed or the conditions on-site, we do not guarantee the product's performance. We also accept no responsibility for any loss, damage, or injury resulting from the use of this information.